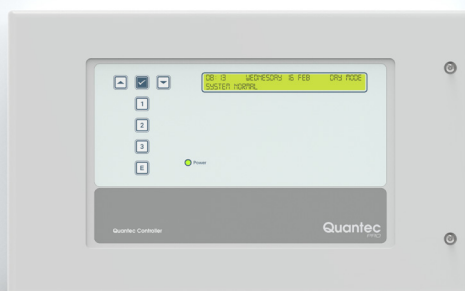


Quantec

PRO

C-TEC's Next Generation Addressable Call System





You're Safe with C-TEC



We've raised the bar so **you can too**

Introducing **Quantec-Pro.**

Based on the solid foundation of our existing Quantec addressable call system, Quantec-Pro raises the bar to heights we never thought possible when we started the project.

Our aim was to keep everything that is good about existing Quantec – stable protocol, ease of system set-up, optional Cloud based CQC focussed data monitoring – and to enhance it with better looking devices, improved power efficiency and greater programming flexibility.

Not only have we succeeded, along the way we've added a new 'Cardiac' call level too!

The result? An aesthetically pleasing addressable call system that is perfect for use across the entire care sector helping save staff time, minimising disturbance and improving the quality of patient care.

Fit for the future

The first thing you will notice about Quantec-Pro is the system's devices.

Quantec-Pro has clean, sleek, custom-designed call points perfect for use in modern care facilities. Wipeable, curved and easy-to-operate they are a refreshing change to devices of the past. And with intuitive text-free icons they are incredibly user-friendly and help overcome any language barriers that may exist.

The system's corridor and nurse station displays are also on another level. Featuring high contrast easy-to-read text, they can accept descriptive place names of up to 24 characters so staff know exactly where calls are coming from.

With attractive monitoring points and a dippable MRSA resistant tail call lead (due late 2026), Quantec-Pro combines good-looks, ease of use and proven technology to ensure the needs of patients, staff and managers is exactly where it should be – right at the forefront.





Quantec-Pro Corridor Displays

Getting staff to where they are needed quickly and efficiently so they can attend to a patient is the primary purpose of any call system. Quantec-Pro's corridor displays are designed to do just that.

With clear, high-contrast and easy-to-read prioritised event text that can support place names of up to 24 characters, pinpointing where and what type of assistance is required has never been easier. Each surface-mounting display also features an onboard hi-output sounder that is able to generate a wide range of tones – including multiple HTM specific tones – to suit a care facility's precise requirements.

Call accept and event scrolling buttons also help ensure calls are handled in line with a site's own CQC call response time targets – all of which can be logged on the system's optional Surveyor2 Cloud based data management software.

Note: Existing Quantec displays in comparison support place names of just 15 characters and do not support HTM tones.

Order code: **QP908C**



Quantec-Pro Call Points

Our surface-mounting Quantec-Pro Call Point adds a touch of class to any bedroom, lounge or dining area.

Instead of having a remote jack socket on its front for the optional connection of ancillary devices such as normally open tail call leads or floor pressure mats, it has two lockable RJ12 sockets underneath.

Ergonomically designed, not only does this neater solution reduce the risk of accidental damage, it also prevents inadvertent device removal to ensure patients are always able to make calls when required.

The Quantec-Pro call point also includes - as standard - an onboard infrared receiver so it can accept calls from Quantec IR staff transmitters or patient pendants, and a 'call follower' sounder so it can notify staff of calls elsewhere on the system via a soft tone when in night mode.

Up to 3 ceiling pulls, IR ceiling receiver extenders or dummy/extender call points can also be connected to the call point which can be optionally programmed to operate in a variety of ways using a Quantec Configurator.

Order code: **QP902RS**



Our new dippable »
Quantec-Pro Tail Call
Lead (due 2026)



Quantec-Pro Cardiac Call Points

And then there were eight! The advent of Quantec-Pro has seen the introduction of an additional call level. As well as Standard Calls, Ensuite, Help Required, Emergency, Staff Attack, Presence and Attendance calls, Quantec-Pro can also generate 'Cardiac' calls.

Featuring HTM-compliant pull-to-activate buttons, our surface-mounting Cardiac Call Points are ideal for use not just in hospitals and intensive care environments but in specialist nursing homes and GP surgeries too.

Activation of a cardiac call will cause a distinct tone to sound throughout the building accompanied by blue flashing lights to clearly differentiate between all other levels of call.

Note: Cardiac Calls can only be generated by pulling a Cardiac Call Point's button (they cannot be generated via infrared/radio devices).

Order code: **QP902CP**



Quantec-Pro Monitoring Points

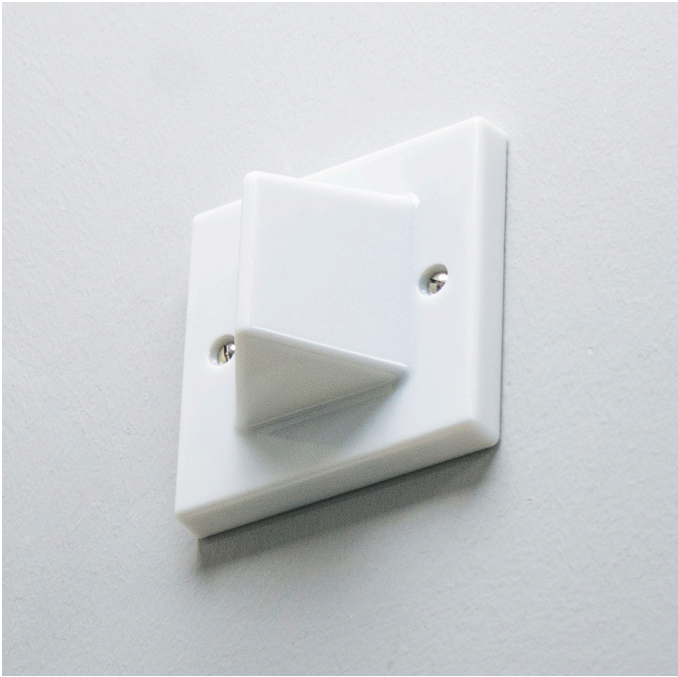
Like all Quantec-Pro calling devices, our feature-rich monitoring points are designed to not just look the part, but act the part too. Extremely versatile, they can be used to monitor drug cupboards, fire exits, equipment storage rooms, doorbells and even telephones.

Any device with a normally open or normally closed switch can be connected to them meaning third-party equipment such as movement sensors, strip switches, flow switches and other devices can be monitored for activation.

Should they sense a door opening or a piece of equipment triggering they can be set up to generate a standard or emergency call dependent on the needs of the site.

Order code: **QP904**

For our FULL Quantec-Pro device listing, see page 11



Quantec-Pro Tri-colour Addressable Overdoor Lights & Sounders

The high-priority 'Cardiac' call level on Quantec-Pro means clearly differentiating between different types of incoming events is critically important.

The two ultra-bright tri-colour (green, red and blue) LEDs located inside our new Quantec-Pro addressable overdoor lights coupled with their library of hi-output tones ensure this is the case.

Programmable to illuminate and sound when certain groups of call points are calling, they are ideal for providing area indication or 'follow me' lights at the ends of corridors. Their cleverly-designed triangular diffusers ensure device activation is highly visible from a distance.

Order code: **QP906A**

Quantec-Pro Overdoor Lights

As well as our new tri-colour addressable overdoor lights and sounders, standard tri-colour overdoor lights are also available for direct connection to Quantec-Pro Call Points or Cardiac Points. These are typically located outside individual rooms to indicate that the device inside the room has triggered.

Order code: **QP906**



QT637



QT631K



QT603



QT605S

Suited Expansion Devices

The healthcare professionals we worked with to create the sleek modern design of Quantec-Pro asked that we complement its addressable devices with a range of suited expansion devices. Products designed so they will sit nicely alongside our other Quantec-Pro devices are listed below.

Order codes:

QT637 Enuresis Sensor

QT631K Dementia Care Room Status Controller

QT603 Network Splitter

QT605S Accessible Toilet Reset Point



Large Corridor Displays

As well as using Quantec-Pro corridor displays and addressable overdoor lights and sounders, you can also connect large corridor displays to the system. To ensure the display shows Quantec-Pro's full 24 character set and new Cardiac call level you must connect it to the system using a QP915 Quantec-Pro display interface.

Order codes:

QT608CD1S Large Corridor Display

QP915 Quantec-Pro Display Interface



Professional Programming

Our dedicated QP901 Quantec-Pro Core Controller includes features above and beyond those on our existing Quantec Controller.

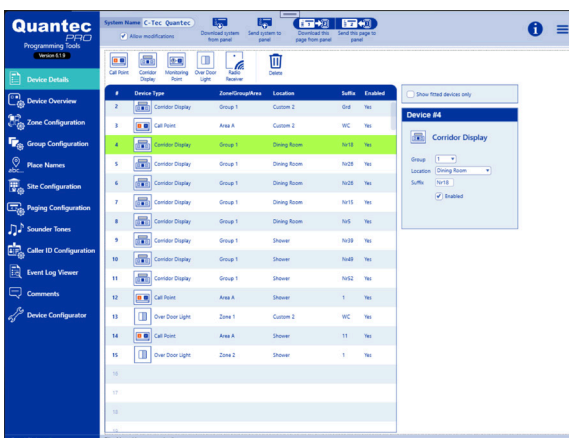
As well as having an extra volt-free output to accommodate the system's additional Cardiac call level, new menus are included that allow:-

- Tone selections to be sent to all devices on the system
- Cardiac calls to be set to trigger globally or locally
- Priority to be given to either cardiac or attack calls

To further assist system set up, new-look QP907 Programming Tools are available as a free Microsoft app from the MS Store. These tools also incorporate the functions previously available in Quantec's separate Device Configurator software meaning one software package does both.

New features in the QP907 Programming Tools allow:-

- Up to 255 editable place names (changed from 40 fixed and 45 custom)
- Longer place names (20 characters + 4 suffix characters compared to 11 + 4 suffix characters)
- More flexible device equations (the Group configuration equation has been increased from 8 to 16 and the Zone configuration equation has increased from 8 to 16).



New-look Programming Tools

Unlike our existing Quantec Controller, our QP901 Quantec-Pro Core Controller does NOT function as a standard Corridor Display when not being used for programming. Therefore if the Core Controller is located in an area where you want to be made aware of incoming calls such as a nursing station, a separate Quantec-Pro Corridor Display will be required.

Frequently Asked Questions

I wish to upgrade an existing Quantec system - is Quantec-Pro backwards compatible?

Yes - but there are limitations. For new installations we recommend you select all your devices from our dedicated Quantec-Pro product listing on page 11. If you want to upgrade an existing system, please note:-

- To utilise Quantec-Pro's additional features such as cardiac calls, longer place names and improved programming equations a QP901 Quantec-Pro Core Controller MUST be used to power and control the system. (You can upgrade an existing QT601-2 Controller using our QP901M/KIT lid and PCB upgrade kit).
- Old QT608C and QT608CD corridor displays will not display Quantec-Pro's longer place names – if you want longer place names to be visible you must replace them with new QP908C Quantec-Pro Displays.
- Large QT608CD1S corridor displays can be used on Quantec-Pro but you will need to update all relevant display interfaces from a QT615S to a QP915.
- If you want to use Quantec-Pro's Cardiac call level you must use Quantec-Pro's QP902CP Cardiac call point. New Quantec-Pro displays and Quantec-Pro tri-colour overdoor lights and sounders will also be needed to indicate these calls.
- All old QT style call points, infrared and radio transmitting and receiving devices, universal devices, ceiling pulls, addressable and overdoor lights and sounders, enuresis sensors and dementia care devices will work on Quantec-Pro. However, old QT606A, QT606S and QT606 overdoor lights and sounders CANNOT indicate cardiac calls.

In summary...

Feature Required	New Controller?	New Displays?	New Call Points?	New ODLs?
Cardiac Calls	Yes	Yes	New Cardiac call points required in areas where cardiac calls need to be made	Yes
Longer Place Names	Yes	Yes	No	No
Improved Programming Equations	Yes	No	No	No

Frequently Asked Questions

I'm a little confused about tail call leads, what are my options?

Existing normally-open ancillary devices such as NC805C/6 tail call leads with a remote jack socket can be converted for use on a QP902RS Quantec-Pro Call point using a QP805G1A 6.5mm remote jack to RJ12 convertor.

However for a tidier solution we recommend you use our new QP905/6 or QP905/14 dippable tail call lead (available 2026) or a QP805/6G1 tail call lead c/w RJ12 connector, both of which will connect directly to the QP902RS Call Point.



Order code: **QP805/6G1**



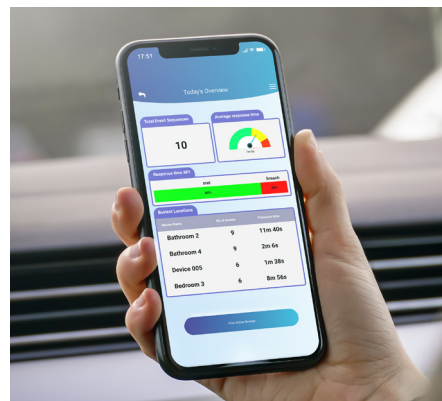
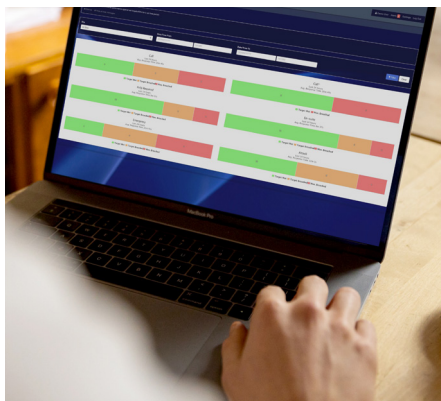
Order code: **QP905/6**



Order code: **QP805G1A**

Is Quantec-Pro compatible with Quantec Surveyor2?

Yes - the desktop and app versions of Surveyor2 can both show Quantec-Pro generated cardiac calls and display the system's longer place names. Call response time thresholds can also be set for cardiac calls as per all other call events.



Order Codes

Quantec-Pro Controllers, Enclosures & Installation Aids	
QP901	Quantec-Pro Core Controller
QP901M/KIT	Quantec-Pro Core Controller lid & PCB upgrade kit (adds Quantec-Pro functionality to a QT601-2 Quantec Controller)
QT385	Flush bezel for Quantec Controller
QT603	Quantec Network Splitter
QP907	Quantec-Pro Programming Software & Lead
QT423	Quantec Device Configurator
QTS2/5	Quantec Surveyor2 'IOT' Card c/w 12 months access

Quantec-Pro Displays & Overdoor Lights / Sounders	
QP908C	Quantec-Pro Corridor Display
QT608CD1S	Large Corridor Display, requires QP915 interface
QP915	Quantec Display interface for use with QT608CD1S
QP906A	Quantec-Pro Tri-Colour Addressable Overdoor Light c/w Sounder
QP906	Quantec-Pro Tri-Colour Overdoor Light

Quantec Call Points	
QP902RS	Quantec Programmable Call Point c/w Sounder, IR Receiver & two n/o RJ12 connectors
QT607	Quantec Ceiling/Wall Pull Unit
QP902CP	Quantec-Pro Cardiac Point
QP904	Quantec-Pro Monitoring Point
QT605S	Quantec Accessible Toilet Reset Point
QT611	Quantec Multi-Purpose Programmable Device
QT612	Quantec Relay Output Device
QT302RX	Quantec Single Gang Addressable Infrared Ceiling Receiver
QT302RXS	Quantec Single Gang Infrared Ceiling Receiver Extender
QT302RXR	Quantec Round Addressable Infrared Ceiling Receiver
QT302RXRS	Quantec Round Infrared Ceiling Receiver Extender
QT302RT	Quantec Test Infrared Ceiling Receiver
QT422RX	Quantec Radio Receiver
QT422RXEX	External Extension Aerial for QT422RX Radio Receiver
QT421	RF Integrity 'Monitored Heartbeat' Transmitter
QT412RXA	Quantec Infrared/Radio Transmitter, rechargeable, push for attack/pull for attack
QT412RXCA	Quantec Infrared/Radio Transmitter, rechargeable. Push for call/pull for attack
QT424/1	Single-way charging unit for QT412 transmitters
QT424/10	Ten-way charging unit for QT412 transmitters
QT432	Quantec Infrared/Radio Patient Neck Pendant
QT432A	Quantec Infrared/Radio Attendance Pendant
QT432W	Quantec Infrared/Radio Patient Wrist Pendant
QT616	Quantec Infrared/Radio Fall Sensor

Quantec Dementia Care Controller & Ancillaries	
QT630	Quantec Dementia Care Controller
QT631K	Quantec Dementia Care Room Status Controller
QT639	Quantec Dementia Care Super-Bright 3W LED Lamp
QT636	Quantec Interface Unit c/w ¼" jack socket
QT637	Quantec Enuresis/general purpose interface socket c/w 2 x ¼" jack sockets
QT638	Quantec PIR sensor
QT645	Quantec PIR power interface c/w isolating keyswitch

Ancillary Calling Devices	
QP905/6	Quantec-Pro Dippable 1.8m/6ft tail call lead c/w RJ12 connector
QP905/14	Quantec-Pro Dippable 4.2m/14ft tail call lead c/w RJ12 connector
QP805/6G1	First generation 1.8m/6ft tail call lead c/w RJ12 connector
QP805G1A	¼" Jack to RJ12 adaptor – allows n/o ancillary call devices with ¼" jack connectors to be connected to a Quantec-Pro Call Point
NC805P	Hand/foot operated pneumatic pad, needs NC805AS
NC805AS	Air switch for NC805P c/w ¼" n/o jack connector
NC805MD	Portable movement detector c/w ¼" n/o jack connector
QT644	Floor pressure mat c/w ¼" n/o jack connector
QT633	Bed exit mat c/w ¼" n/c jack connector - connects to a QT636/637 interface unit
QT634	Chair exit mat c/w ¼" n/c jack connector - connects to a QT636/637 interface unit
QT635	Enuresis (bed wet) sensor c/w ¼" jack connector - connects to a QT637 interface unit ONLY

Quantec Printers & Paging Equipment	
QT600S	Printer/paging wall socket
BF874QAQ	Serial alphanumeric display paging transmitter, approx. 500m range
BF876DQ	Dipole 400mHz aerial & 10m lead, extends BF874QAQ range up to 1500m
BF877QAQ	40 character alphanumeric pocket pager



Quantec *PRO*

Discover more at quantec-pro-nursecall.com



C-TEC
Challenge Way,
Martland Park,
Wigan WN5 0LD,
United Kingdom

Phone: +44 (0)1942 322744
Email: sales@c-tec.co.uk
Web: c-tec.com

Approved Document No.
DML0552200 Rev 2.
E&OE.