

CABLELINE ▶ ULTRA 60

FEATURES

190 x 62mm
profile
Two
Compartment
Twin Lids



Ultra 60 - profile CU2 at dado level.

- Meets and exceeds ANS/TIA/EIA, ISO/IEC11801 & EN50174-2
- Standard Fittings provide for a 50mm minimum bend radius
- Clip fit or 'screw fix secured' options for fittings
- Dedicated data compartment 75 x 62mm.
- Increased depth allows for extra capacity for CAT5e, CAT6, CAT7 data and fibre optic cabling
- Accepts socket mounting boxes up to 50mm deep
- Supplied with 30mm power divider, which is located above socket mounting boxes thereby providing continuous support
- Optional 60mm divider for top compartment
- Pre-punched steel divider for compartment divider
- Accepts all leading wiring accessories including Clicline

Standards: BS 4678-Pt4, BS7671 (IEE Regs), BS6701, BSEN50173, BSEN 50174-2, (CENELEC), ANS/TIA/EIA 586B, ISO IEC 11801.

SELECTOR CHART

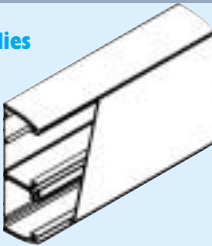
Product	Length	Material	Colours/Finishes Available	Cableline Plus Compatible	Available as PowerTrack	Available Prewired See Pages 65-67	Compatible with Clicline Wiring Accessories See Pages 50-55	Accepts Socket Mounting Boxes		
								25mm deep	35mm deep	50mm deep
CU2	3m	uPVC	Standard Colours: Alpine White Other Colour Options: • RAL Colours	X	✓	✓	✓	✓	✓	✓

• Please contact our sales office for minimum quantities, lead times and price information.

▶ TRUNKING ASSEMBLIES AND FITTINGS

▶ Trunking Assemblies

Ref CU2
Size 190 x 62mm
Packed 2 x 3m
Supplied with 3m power divider (3 x 1m)



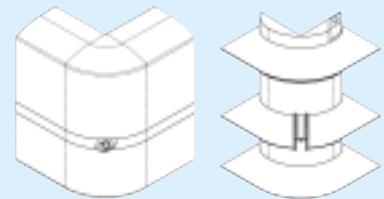
▶ Dividers

Ref CUD2
Size 60mm deep
Packed 3 x 1m



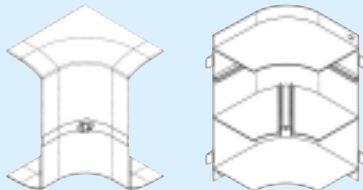
▶ External Angle

Ref CUX2
Packed 1
Clipfit (cover only)
CUXB2
Screw fit



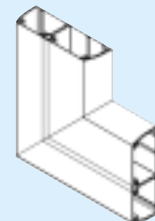
▶ Internal Angle

Ref CUI2
Packed 1
Clip fit (Cover only)
CUIX2
Screw fit



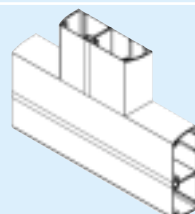
▶ Flat Angle

Ref CUF2
Packed 1
(Complete with integral data cable guides)



▶ Flat Tee

Ref CUT2
Packed 1
(Complete with integral data cable guides)



▶ Joint Cover

Ref CUJ2
Packed 2

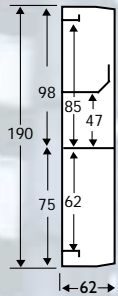


▶ End Caps

Ref CUS2
Packed 2



CU2



Cabling infrastructure solutions in today's market are driving towards greater speeds and bandwidth. An effective cable management solution is crucial to maintaining the performance for high quality protocols.

Mita's new Ultra 60 two compartment trunking has been designed to support and maintain the integrity of your data solution. Ultra 60 meets and exceeds the requirements for ANS/TIA/EIA, ISO/IEC11801, and EN50174-2 standards.

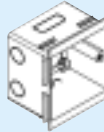
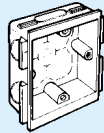
With a dedicated data compartment and a depth of 62mm, Ultra 60 can offer a 50mm bend radius for internal and external bends, flat angles and tees, whilst still incorporating an elegant and stylish look. This makes Ultra 60 a totally integrated solution for both CAT5e, CAT6, CAT7 and fibre optic cables.

COMPONENTS (White unless shown otherwise)

BOXES & FRAMES

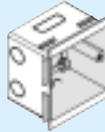
Socket Mounting Boxes

Size	Ref	Packed
1 gang 25mm deep	CLB 3-1	10
1 gang vertical mounting box 25mm deep	CLB 3-1/4	10
1 gang 35mm deep	CLB 4-1	10
2 gang 25mm deep	CLB 3-2	10
2 gang 35mm deep	CLB 4-2	10
1 gang 50mm deep	CLB5-1	10
2 gang 50mm deep	CLB5-2	10



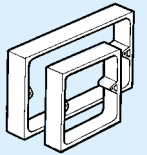
Screened Socket Mounting Boxes

Size	Ref	Packed
1 gang 25mm deep	CLBS 1	10
1 gang vertical mounting box 25mm deep	CLBS 1/4	10
1 gang 35mm deep	CLBS 3	10
2 gang 25mm deep	CLBS 2	10
2 gang 35mm deep	CLBS 4	10
1 gang 50mm deep	CLBS 5	10
2 gang 50mm deep	CLBS 6	10



Extension Collars

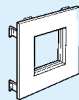
Size	Ref	Packed
1 gang 10mm deep	CEC 110	10
1 gang 19mm deep	CEC 119	10
2 gang 10mm deep	CEC 210	10
2 gang 19mm deep	CEC 219	10



Mounting Frames

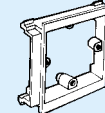
for 45 x 45mm Accessories

Type	Ref	Packed
1 gang	ATMF 451	15
2 gang	ATMF 452	10



Socket Mounting Plate

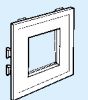
Type	Ref	Packed
1 gang	CTMP 1	15
2 gang	CTMP 2	10



Mounting Frames

for 45 x 45mm Eunica Accessories

Type	Ref	Packed
1 gang	EAMF 1	15
2 gang	EAMF 2	10
2 x 1 gang	EAMF 3	10



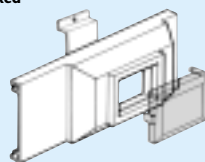
ACCESSORIES

MCB/RCD Housing

Complete with DIN mounting rail & 2 Joint Covers

To suit	Ref	Packed
Profile: EP2 Housing Unit only	DCH 3	1
Housing Unit with Cover	DCHC 3	1

See Technical Section for MCB/RCD suitability.



Screening Divider (Illustrated in Grey)

(With oval knockouts at 300mm intervals)

Size	Ref	Packed
43mm x 1mm	SS43	4x1.5m

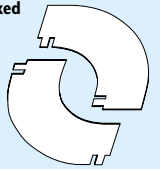
For further details, please refer to the Technical Section.
Other options are available.
Contact us for further information.



Screening Divider

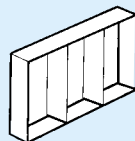
(For continued screening around external/internal angles)

Ref	Packed
SSX43	2
SSI43	2



Rear Cable Entry Box

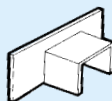
Ref	Packed
CBB3	1



Mini Trunking Adaptors

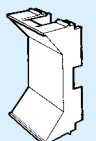
Self Adhesive

Size	Ref	Packed
16 x 16mm	CLA 3-1	5
25 x 16mm	CLA 3-2	5



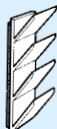
Cross Over Unit (Colour Red)

Ref	Packed
DLO 3	5



Cable Hanger (Colour Red)

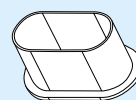
Ref	Packed
CLH 3	10



Oval Bell Mouth Bush

Ref	Packed
BMB	10

Where cabling passes through knockouts, a bell mouth bush can be supplied which fits into the knockout preventing potential snagging of sensitive cabling.



PLEASE NOTE: All drawings are for illustration purposes only. Fittings will vary according to profile selected.