

9. SPECIFICATION

LOAD

Channel 1 (switching):

10A of lighting and or ventilation including incandescent, fluorescent, compact fluorescent, low voltage (switch primary of transformer).

Channel 2 (dimming):

20 x dimming ballasts (DSI or DALI)

SUPPLY VOLTAGE 220-240 Volts AC 50 Hz

TIME OUT PERIOD Adjustable 10 seconds to 99 minutes

LIGHT LEVEL Light to dark

TERMINAL CAPACITY 2.5mm²

MATERIAL Flame retardant ABS, fixing clip polypropylene

TYPE Class 2

TEMPERATURE -10°C to 35°C

CONFORMITY EMC-89/336/EEC

LVD-73/23/EEC



10. PART NUMBERS

EBDSPIR-DD	PIR presence detector
EBDSPIR-DD/ABS	PIR absence detector
EBDSPIR-DD/PRG	PIR detector pre-commissioned (contact sales department)
DBB	Surface mounting box
DD-LCDHS	IR remote control programming handset with LCD screen
UHS	IR remote control user handset with lux and scene setting functionality
UHS3	IR remote control user handset with on/off override only

C.P. Electronics Ltd
Unit 2 Abbey Manufacturing Estate
Mount Pleasant, Wembley
Middlesex. HA0 1RR

Tel: + 44 (0) 20 8900 0671

Fax: + 44 (0) 20 8900 0674

www.cpelectronics.co.uk



IMPORTANT NOTICE!

This device should be installed by a qualified electrician in accordance with the latest edition of the IEE wiring regulations.

Due to our policy of continual product improvement CP Electronics reserves the right to alter the specification of this product without prior notice.

PRODUCT DATA AND INSTALLATION SHEET

EBDSPIR-DD DIRECT DIM PIR PRESENCE DETECTOR



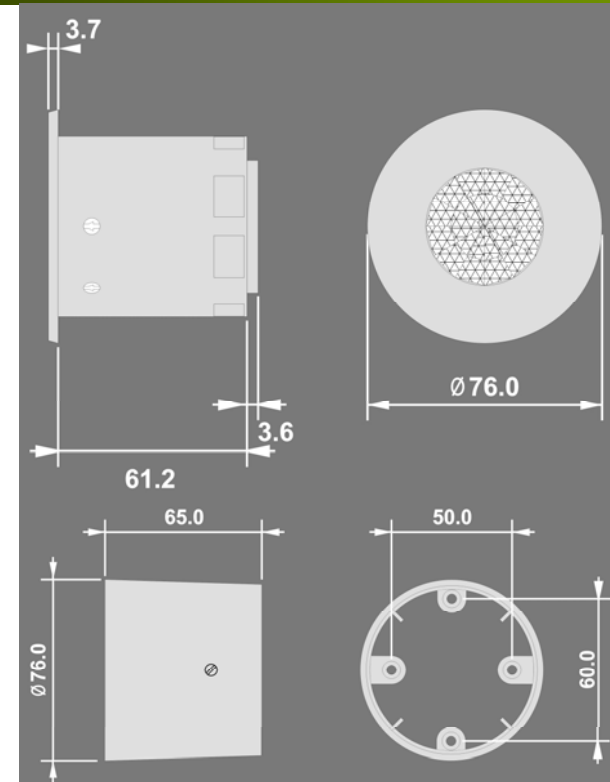
Direct Dim



CONTENTS

Section	Contents	Page
1	Dimensional information	1
2	Description and operation	2
3	Wiring and fixing	3
5	Programming	6
6	Wiring diagrams	8
7	Detection pattern diagrams	11
8	Fault finding	11
9	Specification	12
10	Part numbers	12

1. DIMENSIONS



2. DESCRIPTION AND OPERATION

The EBDSPiR-DD PIR (passive infrared) presence detector provides automatic control of lighting loads with optional manual control. It can be used on incandescent, fluorescent and compact fluorescent lighting and DSI or DALI digital dimming ballasts over 1 or 2 channels. The unit detects movement using a PIR sensor and turns the load on. When an area is no longer occupied the load will switch off after an adjustable time out period.

The dimming channel of the detector can be used to control the light output of luminaires that are fitted with dimming ballasts. The detector measures the overall light level in the detection area and calculates the correct output for the luminaires, to achieve a preset lux level (maintained illuminance). The switching channel of the detector can either be used to isolate the supply to the dimming ballasts (saving on the standby current of the ballasts) or to switch a separate channel of standard, non-dimming luminaires.

Two input terminals can be used to manually override the dimming levels and override the lights on or off.

The flexibility of having two channels and two switch inputs allows the following example scenarios:

1. Dim an outside row of luminaires whilst internal fittings are switched
2. Provide absence detection (see below) for two separate channels
3. Maintained illuminance system with manual up/down controls

An integral infra-red sensor in the unit allows the unit to be programmed using the optional DD-LCDHS programming handset. This gives complete flexibility over many of the operating parameters. Without the handset, manual adjustments can be made to the sensitivity, lux and time settings using the controls on the rear of the sensor head.

The UHS user handset can be used to change output lux levels and override the lights on or off.

Two standard units are available:

EBDSPiR-DD - presence detection:

When movement is detected the load will automatically turn on. When the area is no longer occupied the load will automatically switch off after an adjustable time period.

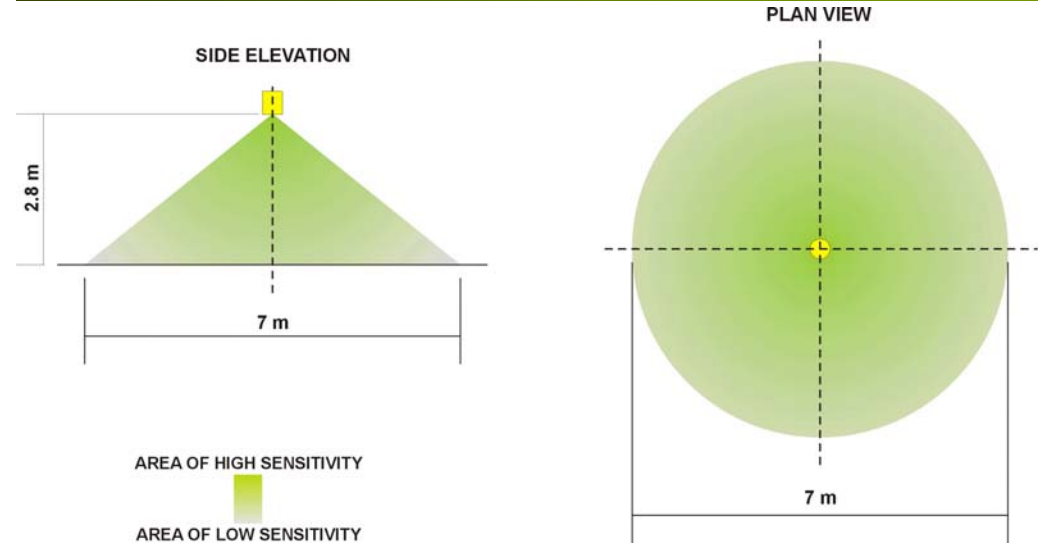
EBDSPiR-DD/ABS - absence detection:

The load is manually switched on. When the area is no longer occupied the load will automatically switch off after the adjustable time period has elapsed. Note that the EBDSPiR-DD can be programmed to absence detection using the programming handset.

In most applications the EBDSPiR-DD can be used with simple manual adjustment. However, the EBDSPiR-DD unit has a comprehensive set of features that can be set using the DD-LCDHS handset. Alternatively the units can be commissioned as follows:

- On-site commissioning service - please contact our sales department for details.
- Pre-commissioning service - the units will be despatched to site with the correct features set. The part number will read EBDSPiR-DD/PRG followed by the project reference number. Please contact our sales department for details.

7. DETECTION PATTERNS



8. FAULT FINDING

LOAD DOES NOT COME ON

Check to see if the live supply to the circuit is good. Strap across the *L* and *LIVE OUT* terminal to turn the load on.

If the supply and wiring are good, check the LUX level setting. Increase the LUX level setting to allow the controller to turn on at higher ambient natural light level.

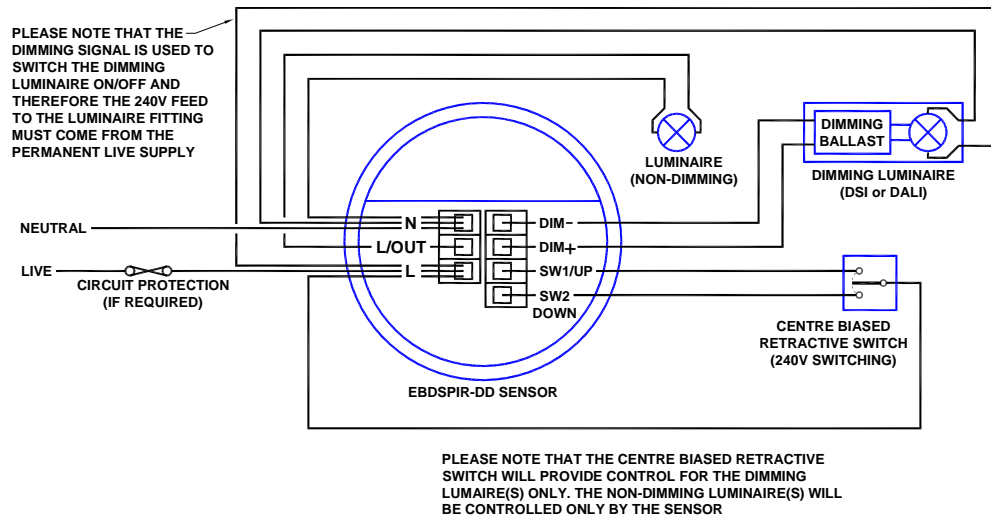
If the detection range is smaller than expected, check the diagram above. Rotating the sensor slightly may improve the range.

LIGHTS DO NOT GO OFF

Ensure that the area is left unoccupied for longer than the selected timer setting.

Make sure that the sensor is not adjacent to circulating air, heaters or lamps.

6.3 Two channel, common switch (continued)



6.4 Single channel switching

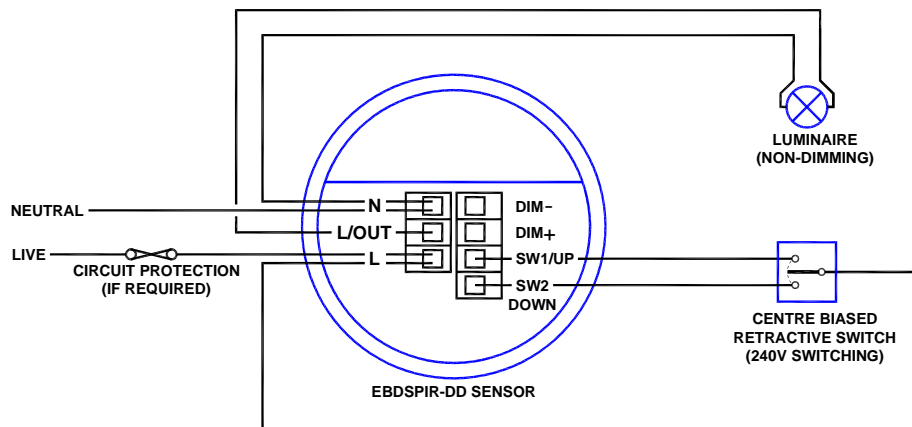
Functions: Switches channel 1 only with occupancy, optional override switch. No dimming output.

Configured to presence detection: Turns on automatically with occupancy. Press and release down switch to turn off. Press and release up switch to turn back on. Turns off after occupancy.

Configured to absence detection: Press and release up switch to turn on. Press and release down switch to turn off. Turns off after occupancy.

Channel mode: Set to “Switch only”

Switch mode: Set to “2 position switch together”. Note: a single position switch can be used instead to toggle the output, set to “1 position switch separate”.

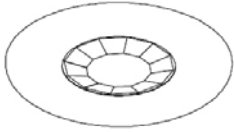


3. WIRING & FIXING

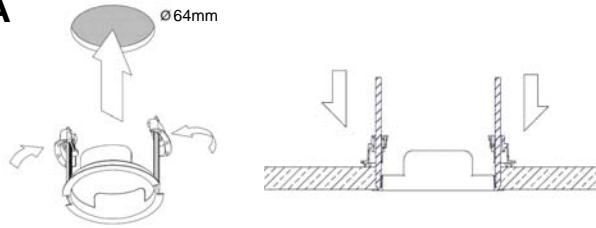
1. Wire the products using the diagrams shown in section 6.
2. To switch from more than one position simply wire two or more units in parallel using the Live, Neutral, Switched Live and manual switch wires only. The dimming connection must be wired to one unit only.
3. The detector should be sited so that the occupants of the room fall inside the detection pattern shown in section 7, at a recommended ceiling height of 2.8m. Note that the lower the sensor is installed the smaller the detection range will be, subject to the parameters shown on the diagram.
4. Avoid direct sunlight entering the sensor.
5. Do not site within 1m of forced air heating or ventilation.
6. Do not site within 1m of any lighting.
7. Do not fix to a vibrating surface.
8. Mount using one of the three options above overleaf.
9. Connect the sensor via the terminal blocks. Live supply to the **L** terminal; load to the **L/OUT** terminal; Neutral to the **N** terminal on the green terminal block. Dimming / external connections should be made as required according to the applicable wiring diagrams shown in section 6.
10. Use a small screwdriver to set the LUX level adjuster fully clockwise, the time to minimum (fully anticlockwise) and the sensitivity to maximum (fully clockwise).
11. Power the unit up—the load should come on immediately.
12. Vacate the room or remain very still and wait for the load to switch off (should take no more than 2 minutes).
13. Check that the load switches on when movement is detected.
14. For dimming applications, set the light output level by using the LUX adjustment thumbwheel or the handset. See section 5.5 for handset operation.
 - During operation the output level varies very gradually. However when the LUX level is changed the unit automatically enters setup mode: in this mode the output level varies rapidly. After the setup time the unit reverts to normal.
 - When adjusting the output, allow the output level to settle by changing very gradually.
 - To disable the maintained illuminance function completely, set the LUX level to maximum.
15. For non-dimming applications the LUX thumbwheel determines the ambient light level at which the lights turn on.
16. Select the time using the adjuster, fully clockwise is the maximum.
17. *Using the UHS or UHS3 infra-red handset: the override on button turns the unit on permanently; the override off button turns the unit off permanently; the cancel button cancels the overrides. When an override is selected an LED will flash inside the unit. The UHS handset can also be used to set the lux levels—see Section 5.5*

Note: the above adjustments can also be made using the DD-LCDHS handset instead of the manual adjusters. See section 5.

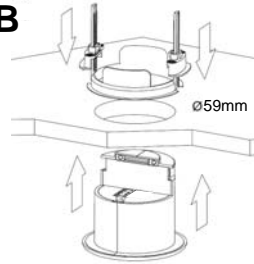
FLUSH FIXING



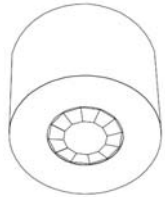
1A



1B

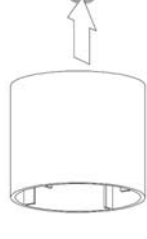


SURFACE FIXING

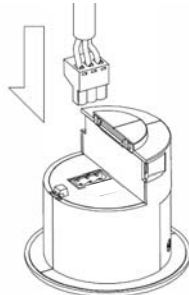


1

50mm or 60mm fixing centres



2



6.2 Two channel, individual switches

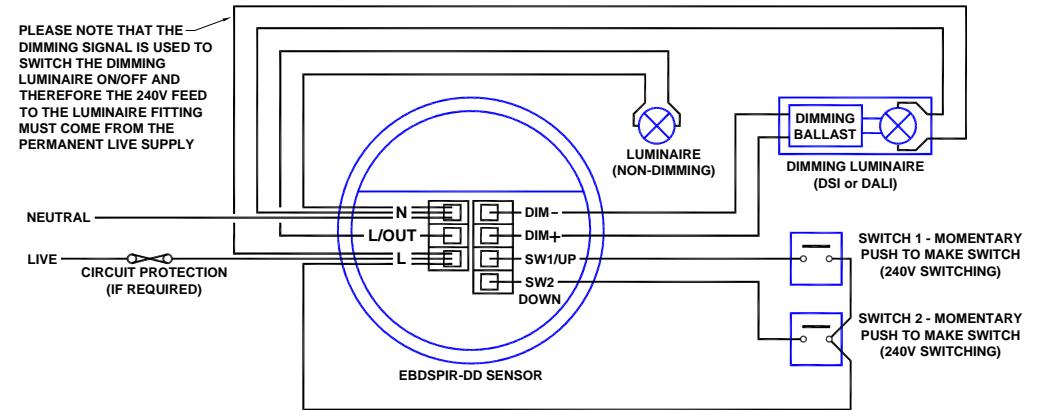
Functions: Switches both channels with occupancy. Maintains illuminance, dims and switches the dimming channel using optional single position retractive switch (switch 2). Switches the switching channel using the optional single position retractive switch (switch 1).

Configured to presence detection: Turns on automatically with occupancy. Maintains illuminance (dimming channel only). Press and release switch to toggle output. Press and hold switch to dim up and down (reverses direction with each press). Turns off after occupancy.

Configured to absence detection: Press and release switch to turn on. Maintains illuminance (dimming channel only). Press and release switch to turn off. Press and hold switch to dim up and down (reverses direction with each press). Turns off after occupancy.

Channel mode: Set to "Switch and dim separate"

Switch mode: Set to "1 position switch separate"



6.3 Two channel, single switch

Functions: Switches both channels with occupancy. Maintains illuminance, dims and switches the dimming channel using optional centre biased retractive switch .

Configured to presence detection: Turns on automatically with occupancy. Maintains illuminance (dimming channel only). Press and release down switch to turn off. Press and release up switch to turn back on. Press and hold up switch to dim up, press and hold down switch to dim down. Turns off after occupancy. Channel 1 does not operate with switch.

Configured to absence detection: Press and release up switch to turn on. Maintains illuminance (dimming channel only). Press and release down switch to turn off. Press and hold up switch to dim up, press and hold down switch to dim down. Turns off after occupancy. Channel 1 does not operate with switch.

Channel mode: Set to "Switch and dim separate"

Switch mode: Set to "2 position switch separate"

6. WIRING DIAGRAMS

6.1 Single channel dimming

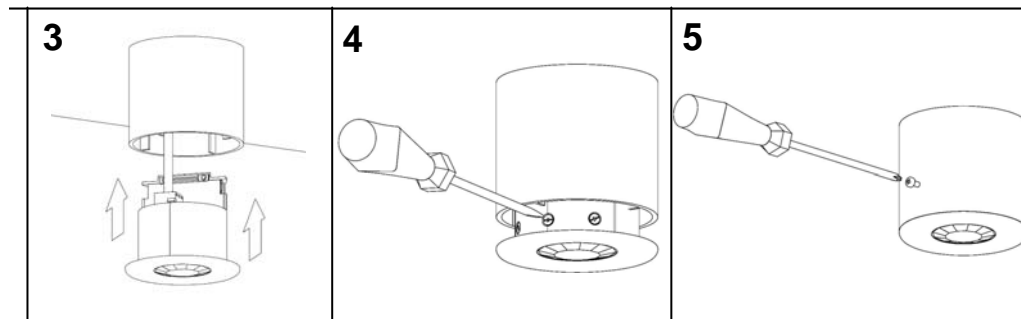
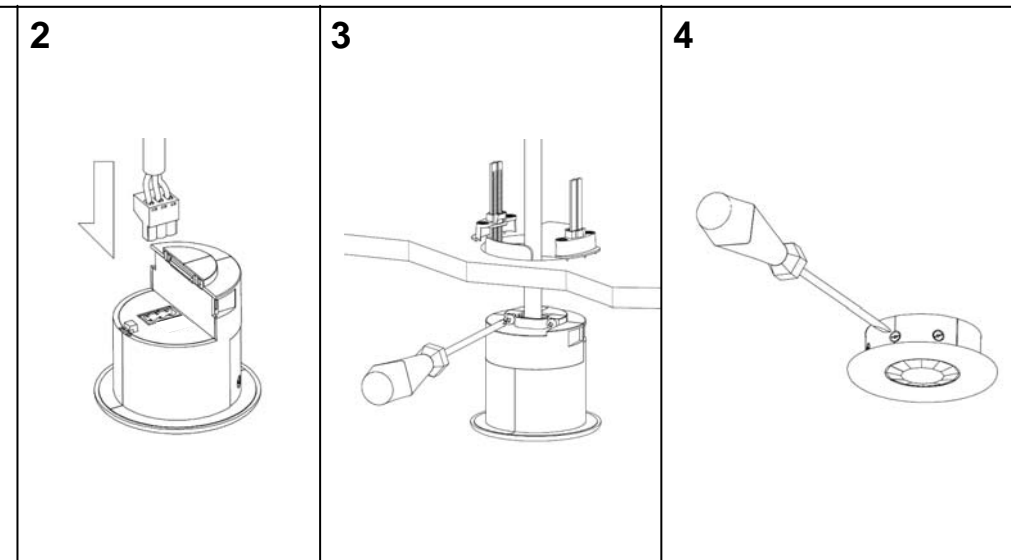
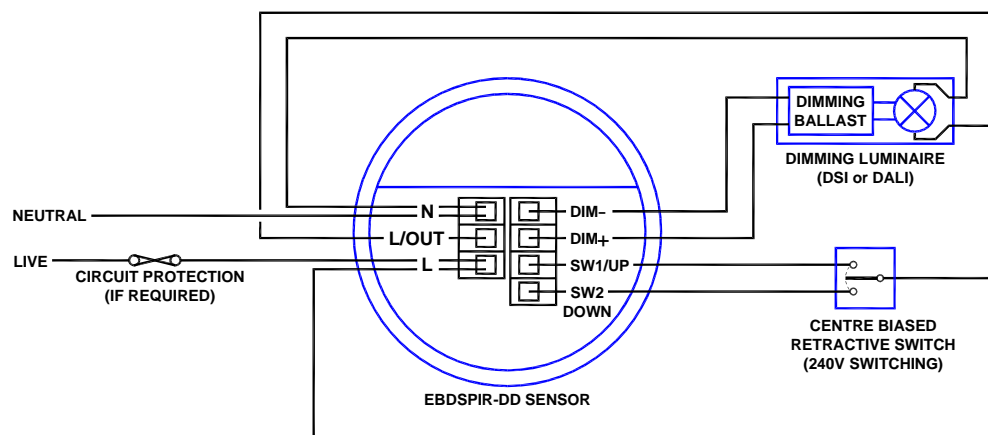
Functions: Switches the luminaire with occupancy and maintains illuminance. Dims and switches using optional centre biased retractive switch (MK K4900 or similar).

Configured to presence detection: Turns on automatically with occupancy. Maintains illuminance. Press and release down switch to turn off. Press and release up switch to turn back on. Press and hold up switch to dim up, press and hold down switch to dim down. Turns off after occupancy.

Configured to absence detection: Press and release up switch to turn on. Maintains illuminance. Press and release down switch to turn off. Press and hold up switch to dim up, press and hold down switch to dim down. Turns off after occupancy.

Channel mode: Set to "Switch and dim together".

Switch mode: Set to "2 position switch together".



5. PROGRAMMING

All the following functions can be programmed using the remote control DD-LCDHS handset:

1. Detector Parameters (factory default in brackets):

- 1.1 **Time adjustment** (20 min) 10 seconds to 99 minutes time delay (select 0 for 10 second delay – use for commissioning only).
- 1.2 **Sensitivity On** (9) Sensitivity level when the detector is already operational adjustable between 1 (min.) and 9 (max.)
- 1.3 **Sensitivity Off** (9) Sensitivity level for switching the detector on – adjustable between 1 (min.) and 9 (max.).
- 1.4 **Power Up On** (Y) Select No for a 30 second delay on start up. If Yes is selected, there will be no delay on start up and the detector will always power up detecting.
- 1.5 **Walk Test** (N) An LED behind the detector lens will flash to show movement has been detected (use for commissioning).
- 1.6 **Disable Detector** (N) Disables detection, leaving the relay output permanently off with the dimming output operational. This mode is used when the unit is for maintained illuminance only.
- 1.7 **Factory Default** Restores factory default settings.

2. Modes (factory default in brackets):

2.1 Channel Modes

- 2.1.1 **Switch only** Usually used for absence detection - in this mode the dimming channel is not used.
- 2.1.2 **Switch and dim together** (default) The detector will switch and dim the lighting together.
- 2.1.3 **Switch and dim separate** Provides 2 channel operation – Channel 1 is switched via the relay output, and Channel 2 is dimmed / switched via the dimming output.

2.2 Switch Modes

- 2.2.1 **2 position switch together** (default) A single centre biased retractive switch will be used to control both channels together.
- 2.2.2 **2 position switch separate** A single centre biased retractive switch will be used to control only the dimming channel.
- 2.2.3 **1 position switch together** A single position retractive switch controls both channels together.
- 2.2.4 **1 position switch separate** Two single position retractive switches, controlling the channels separately.

3. Switching Channel 1 functions (factory default in brackets):

- 3.1 **Presence detection** (EBDSPIR-DD default) Auto switch on with detection, auto off after movement ceases and time delay ends.
- 3.2 **Absence detection** (EBDSPIR-DD/ABS default) Manual switch on, auto off after movement ceases and time delay ends.
- 3.3 **Switch level on** (9) Lux level setting to prevent the luminaires being switched on if the ambient light level is sufficient (adjustable between 1 and 9). The luminaires will always be switched on at level 9.
- 3.4 **Switch level off** (9) Lux level setting to switch the luminaires off during occupancy if the ambient light level goes above the setting (adjustable between 1 and 9). Level 9 will always keep the lights on. This setting can be used for “window row switching”.

4 Dimming Channel 2 functions (factory default in brackets):

- 4.1 **Light level** Maintained illuminance level (adjustable between 1 and 999). At 999 the output will be always be at maximum.
- 4.2 **Presence detection** (EBDSPIR-DD default) Auto switch on with detection, auto off after movement ceases and time delay ends.
- 4.3 **Absence detection** (EBDSPIR-DD/ABS default) Manual switch on, auto off after movement ceases and time delay ends.
- 4.4 **Switch level on** (9) Lux level setting to prevent the luminaires being switched on if the ambient light level is sufficient (adjustable between 1 and 9). The luminaires will always be switched on at level 9.
- 4.5 **Switch level off** (9) Lux level setting to switch the luminaires off during occupancy if the ambient light level goes above the setting (adjustable between 1 and 9). Level 9 will always keep the lights on. This setting can be used for “window row switching”.
- 4.6 **DSI** (default) Selects DSI dimming
- 4.7 **DALI** Selects DALI dimming
- 4.8 **Memorise** (N) If this is set to Yes, the last manual lux level set will be memorised and used as the new switch on level.
- 4.9 **On value** (99) Dimming output level when switched on (0-99).
- 4.10 **Off value** (0) Dimming output level when switched off (0-99). If set to anything other than 0 the light will not switch off but maintain a background lighting level.
- 4.11 **Fade value** (10) After occupancy ceases, this dimming output level is loaded for the fade time (adjustable between 0 and 99).
- 4.12 **Fade mins** (0) This is the time period (adjustable between 0 and 99 minutes) that the luminaire will be held at the fade value before turning off. A value of 0 disables the fade function.
- 4.13 **Max value** (99) Maximum dimming output level (adjustable between 0 and 99).
- 4.14 **Min value** (1) Minimum dimming output level (adjustable between 0 and 99).
- 4.15 **Speed on** (40) Determines the dimming response speed after the setup time has finished. Measured in 0.1 sec intervals.
- 4.16 **Speed set** (5) Determines the dimming response speed during the set up time. Measured in 0.1 sec intervals.
- 4.17 **Set seconds** (120) Determines how long the dimming response set-up period lasts on power-up or on setting change (adjustable between 1 and 999 seconds). This enables the desired lux level to be achieved rapidly when the lights come on, or during setup.

5 User Menu

DD-LCDHS user menu or UHS handset functions:

- 5.1 **Lux up** Increase light level. Reverts when occupancy cycle complete.
- 5.2 **Lux down** Decrease light level. Reverts when occupancy cycle complete.
- 5.3 **Scene up** Steps up between 6 pre-defined scenes.
- 5.4 **Scene down** Steps down between 6 pre-defined scenes.
- 5.5 **Scene#** Select the individual scene, between 0 and 6. (1 = min. output; 2 = 10%; 3 = 25%; 4 = 50%; 5 = 75%; 6 = 100%)
- 5.6 **Override on** Permanently overrides the luminaire output on.
- 5.7 **Override off** Permanently overrides the luminaire output off.
- 5.8 **Cancel** Cancels the on or off override, returning the detector to normal operation.
- 5.9 **Set** If sent before using lux up or lux down, it will set the light level as in 4.1